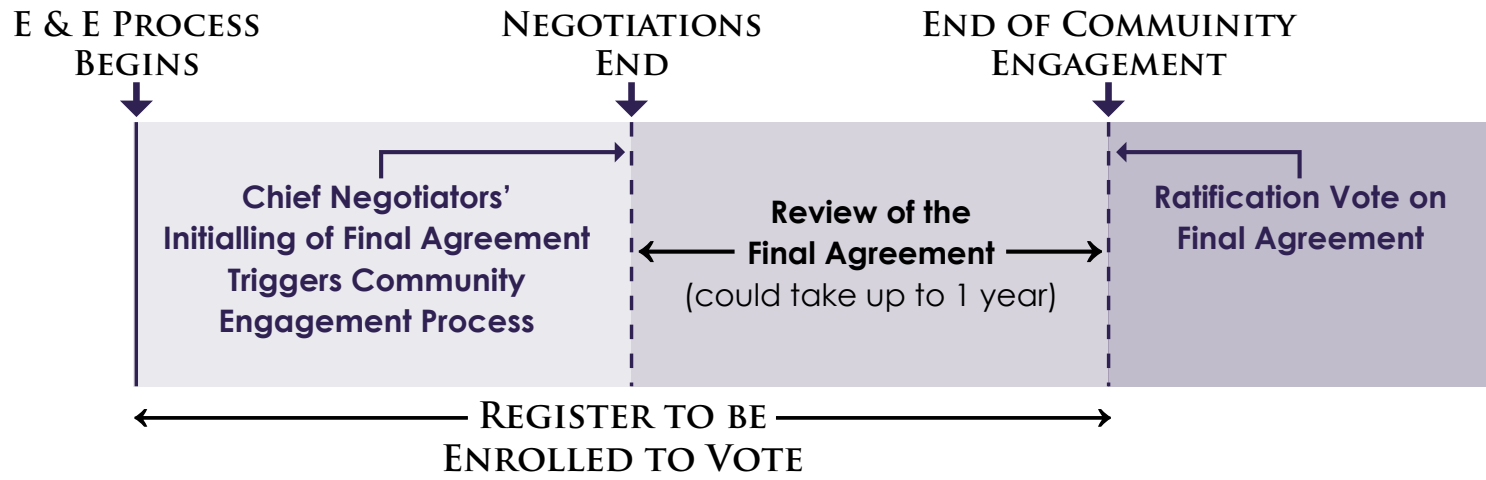


# COMMUNITY ENGAGEMENT PROCESS



## CONTACT

### In-SHUCK-ch Nation

41290-B Lougheed Hwy

Deroche, BC

V0M 1G0

Ph: **604.820.6873**

Fx: **604.820.6847**

Email: [questions@inshuckch.com](mailto:questions@inshuckch.com)

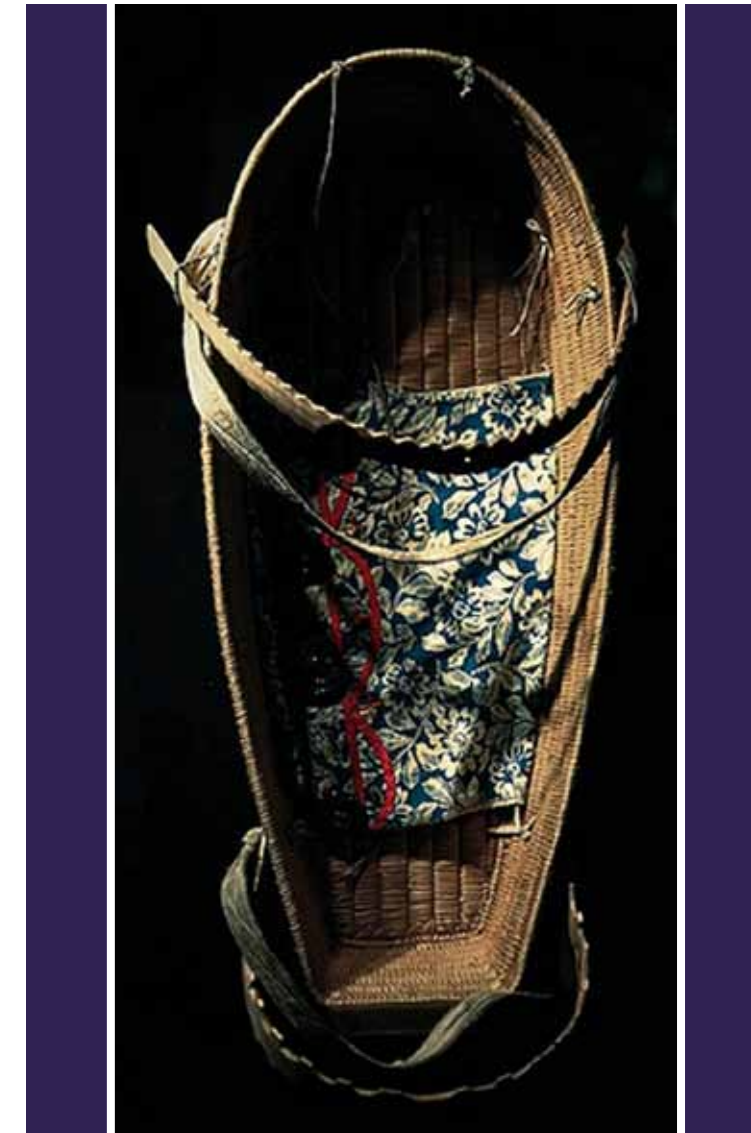
Web: [www.inshuckch.com](http://www.inshuckch.com)



# TREATY



## In-SHUCK-ch Nation Eligibility & Enrolment and Ratification Process



In-SHUCK-ch  
NATION

# ELIGIBILITY & ENROLMENT/RATIFICATION PROCESS

## What is Ratification?

Ratification is the approval of the Final Agreement. Ratification is necessary to show that the In-SHUCK-ch Nations communities support the treaty.

## How does the Ratification Process work?

### There are three stages to the Ratification Process by In-SHUCK-ch Nation:

1. Enrolment
2. Community Engagement (Review of the Final Agreement)
3. Referendum vote on the Final Agreement

## STAGE ONE Enrolment

- Individuals must apply to enrol and provide valid identification to show they meet the criteria to be on the Enrolment Register.
- Once enrolled individual names are entered on the Enrolment Register.
- The Enrolment Register is used to identify Eligible Voters.
- Enrolling or applying to enrol does not change band membership and Indian Status.
- Enrolment will continue up to the ratification vote.

# ELIGIBILITY & ENROLMENT/RATIFICATION PROCESS

## STAGE TWO Community Engagement (Review of Final Agreement)

- Community Engagement begins when the Chief Negotiators initial the Final Agreement.
- Initialling the Final Agreement means that British Columbia, Canada and In-SHUCK-ch Nation agree that negotiations are over and the review period begins.
- Community Engagement provides time and information for you to make a decision on the Final Agreement.
- Review of the Final Agreement could take up to one year.

## STAGE THREE Referendum Vote on the Final Agreement

- At the end of the Community Engagement process there will be a formal vote on the Final Agreement.
- Eligible voters are on the Enrolment Register and at least 18 years old.
- Ratification requires a majority (50%+1) of Eligible Voters in each community.

### Next steps:

If there is a successful ratification vote, BC and then Canada must also ratify the Final Agreement.

# ELIGIBILITY & ENROLMENT TIMELINE

